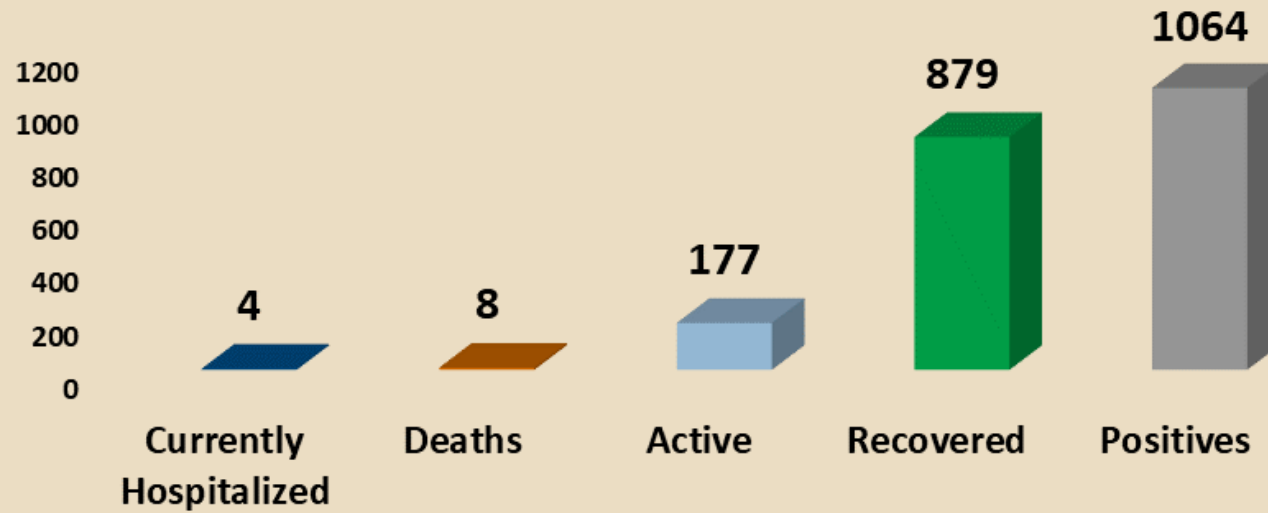




EBCI COVID-19 DATA  
UPDATED JANUARY 11, 2021

Updated Every Monday, Wednesday, and Friday

## Total Positive COVID-19 Patient Outcomes Updated January 11, 2021

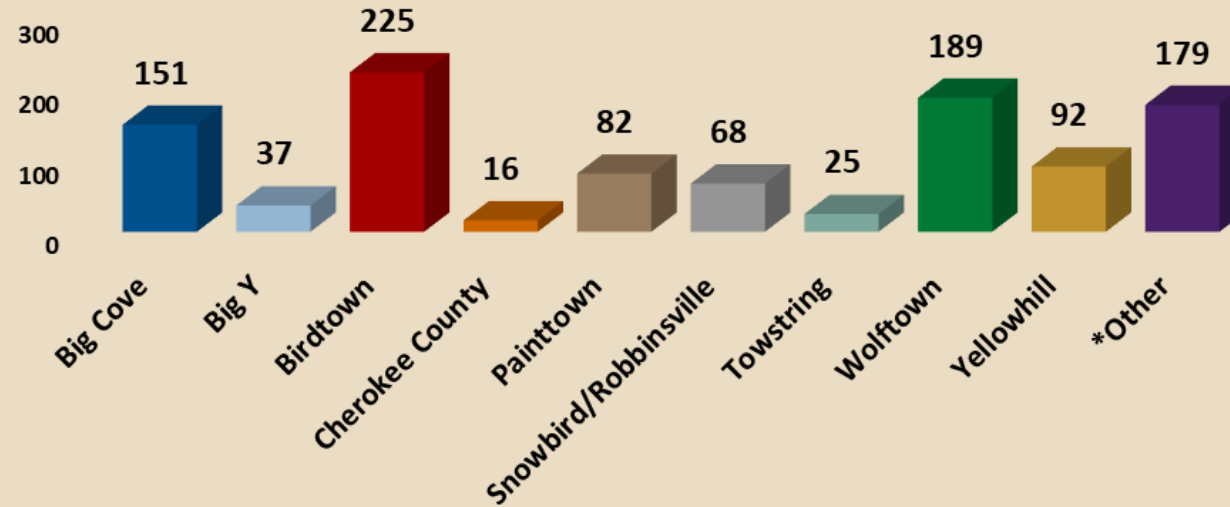


**Since Noon Jan 8, 2021**  
New Hospitalizations = 0  
New Deaths = 0  
New Recovered = 20  
New Positives = 30  
New Negatives = 105

**Testing Data**  
Total Tests Administered = 18,205  
Total Negative Tests = 16,873  
Pending Tests = 103

Revised December 2, 2020

## Total COVID-19 Positive Patients by Community Updated January 11, 2021



### Since Noon Jan 8, 2021

Big Cove = 2

Big Y = 2

Birdtown = 7

Cherokee Co. = 0

Painttown = 4

Snowbird = 1

Towstring = 0

Wolftown = 5

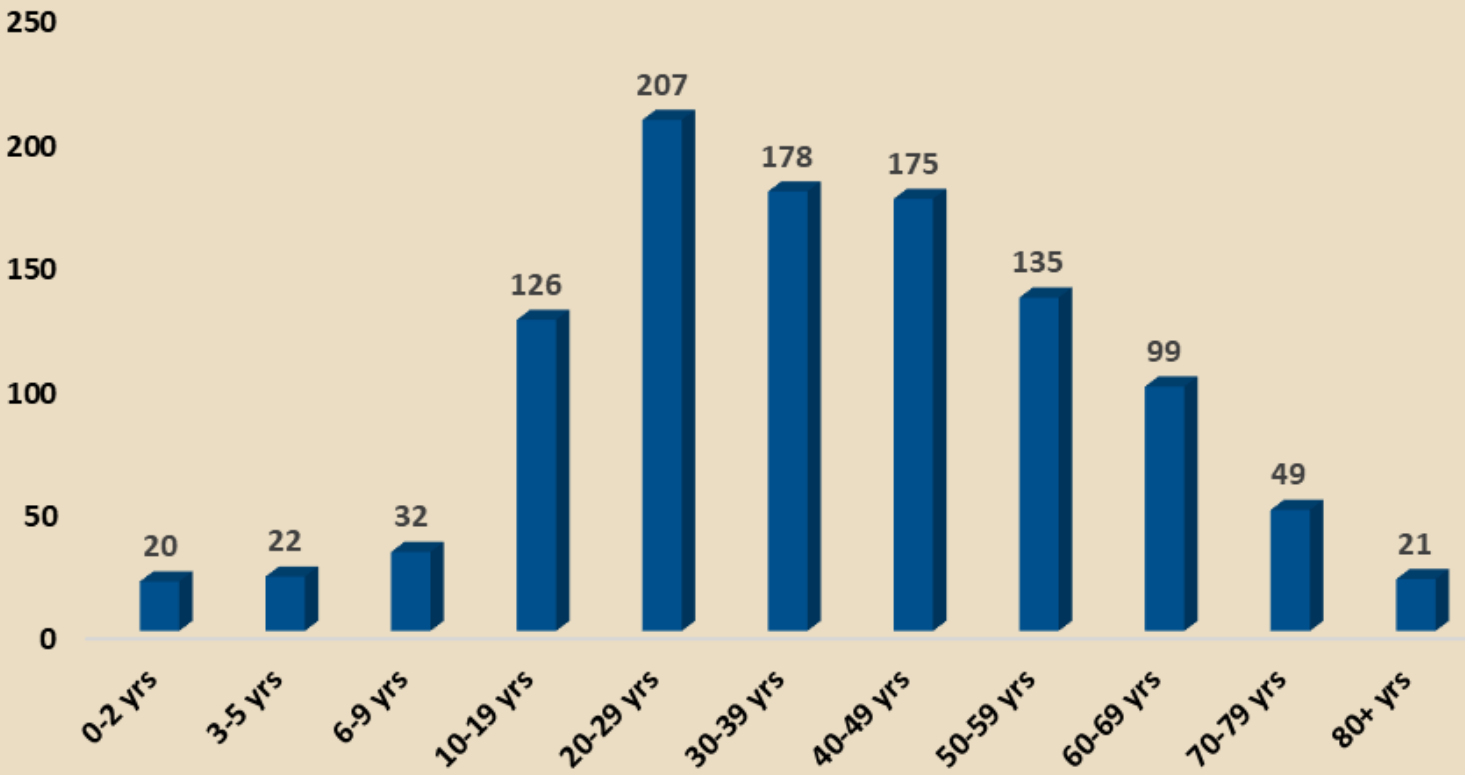
Yellowhill = 4

Other = 5

*\*Other includes positives residing outside listed communities or those who did not report community.*

Revised October 23, 2020

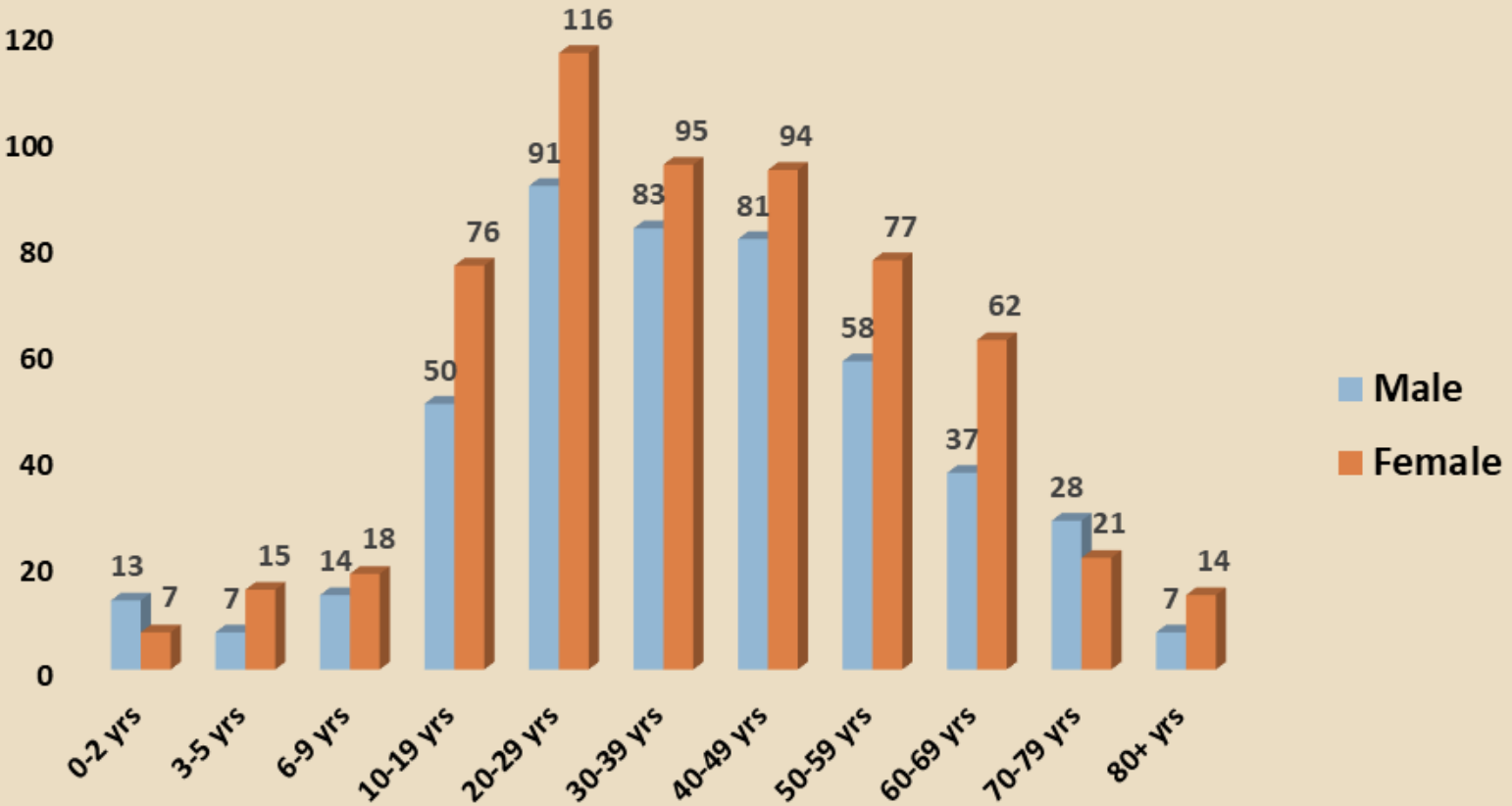
# COVID-19 Positive Patients by Age Group Updated January 11, 2021



Created July 15, 2020

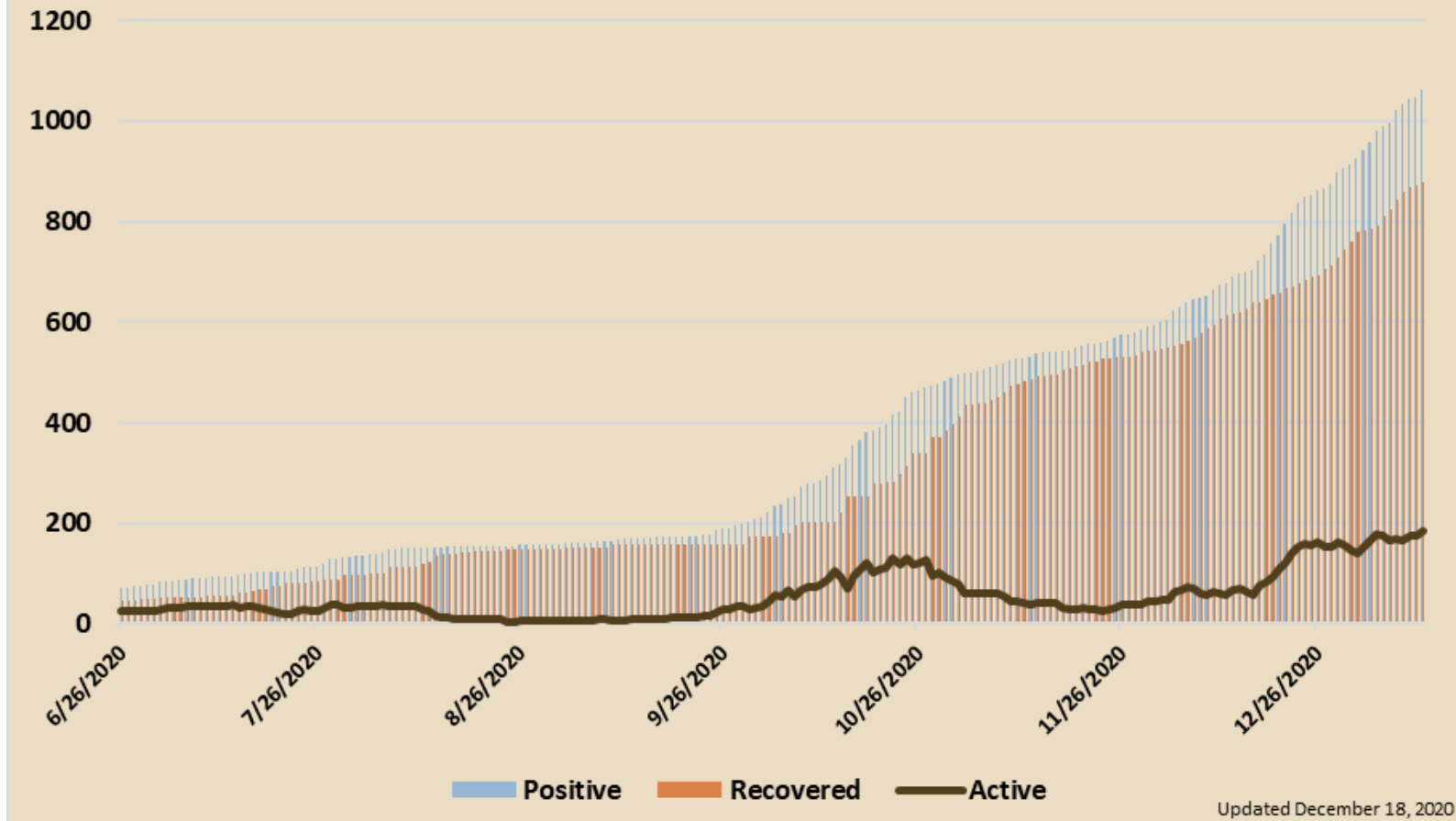
# COVID-19 Positive Patients by Gender

Updated January 11, 2021

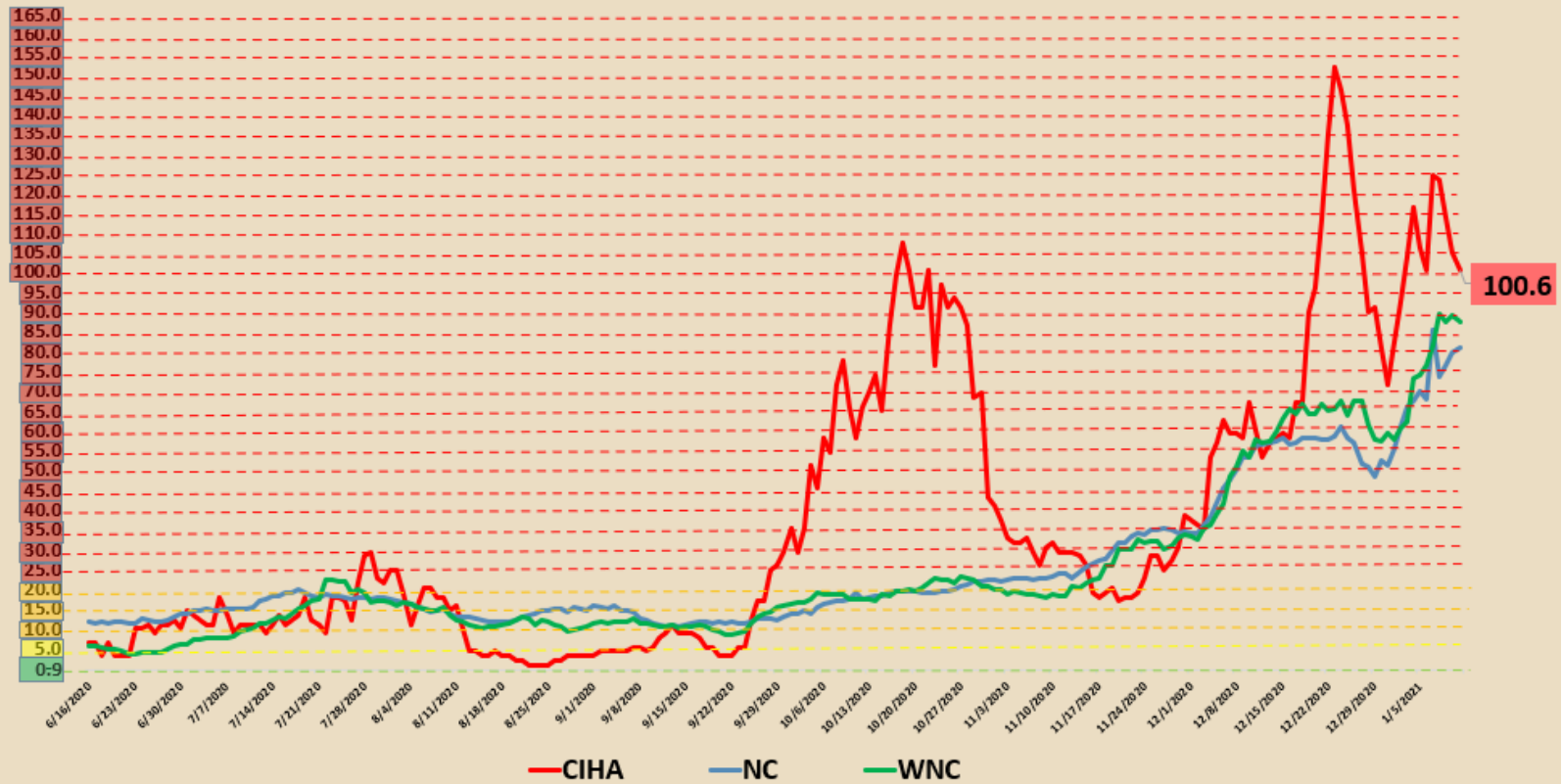


Created July 15, 2020

## Total Positive, Total Recovered, and Current Active Cases Updated January 11, 2021



## COVID-19 Daily New Reported Cases per 100,000 (7 day rolling average) CIHA, WNC, NC Updated January 11, 2021



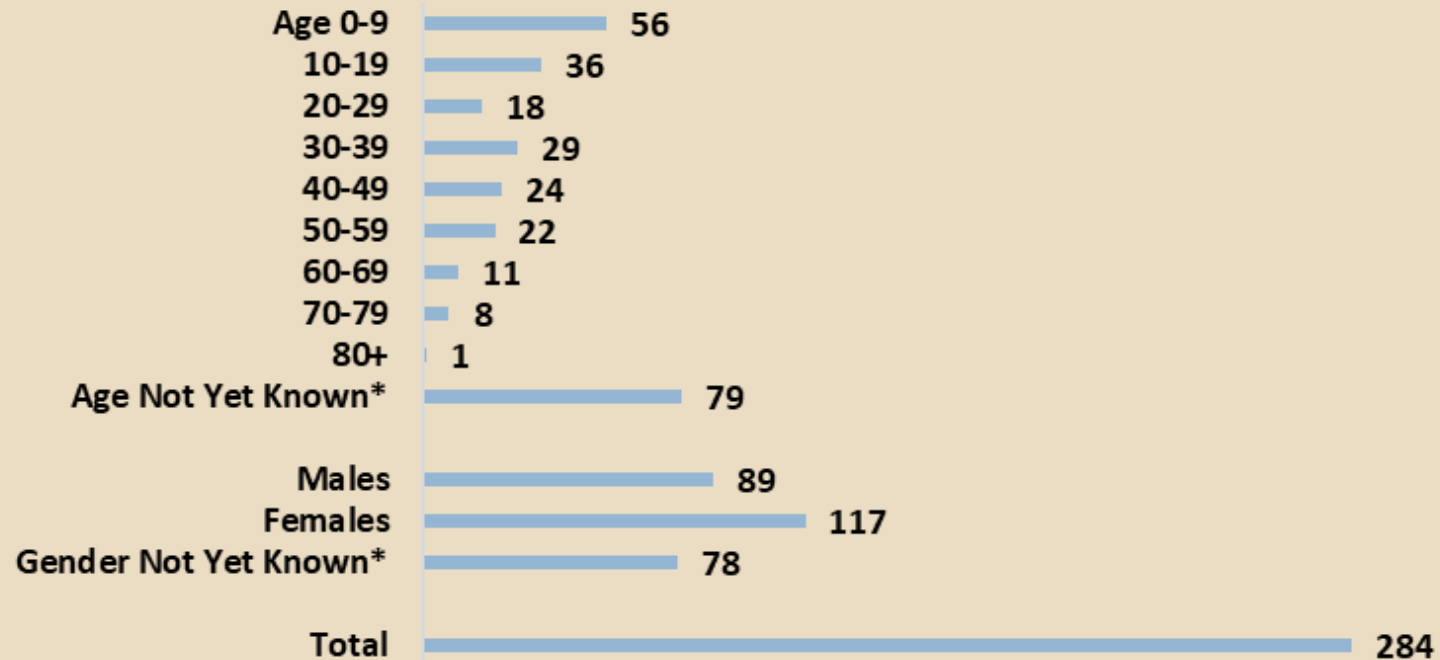
### COVID Risk Levels

- Green**= TAKE EVERYDAY COVID-19 PRECAUTIONS. Less than 1 case per 100,000 on a 7 day rolling average.
- Yellow**= INCREASE EFFORTS TO LIMIT PERSONAL EXPOSURE. 1-9 cases per 100,000 on a 7 day rolling average.
- Orange**= LIMIT EVERYDAY ACTIVITIES TO INCREASE SAFETY. 10-24 cases per 100,000 on a 7 day rolling average.
- Red**= TAKE STRONG MEASURES TO LIMIT ALL CONTACT. 25+ cases per 100,000 on a 7 day rolling average.

Revised December 23, 2020

## Direct Contacts That Are Currently Being Monitored and Under Home Quarantine

### Updated January 11, 2021



\*Not yet knowns may be recently added contacts or contacts that declined to provide certain information.

Created October 7, 2020