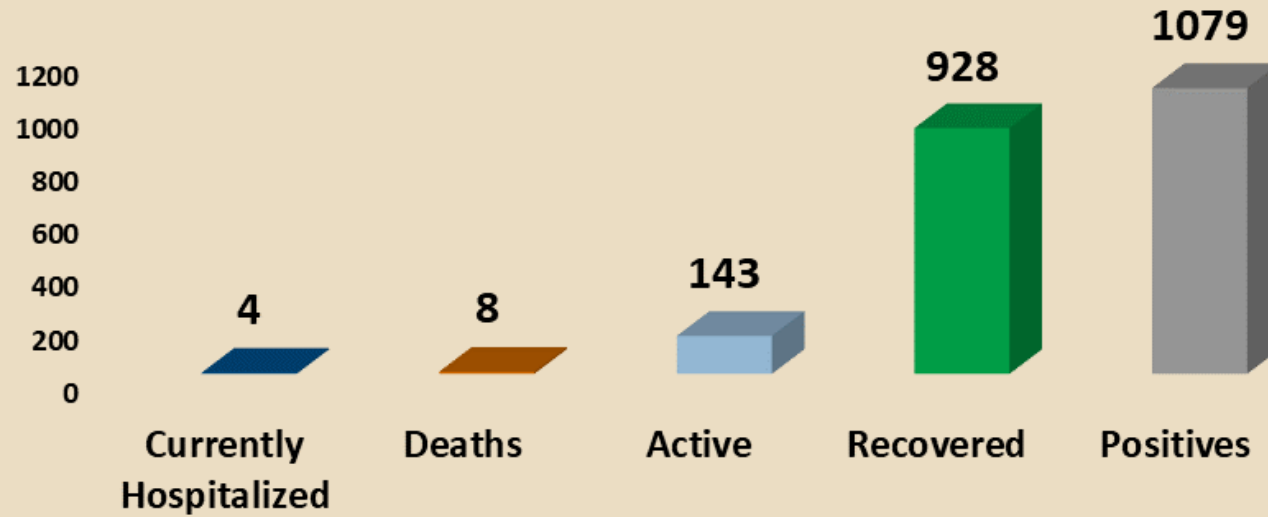




EBCI COVID-19 DATA UPDATED JANUARY 13, 2021

Updated Every Monday, Wednesday, and Friday

Total Positive COVID-19 Patient Outcomes Updated January 13, 2021



Since Noon Jan 11, 2021

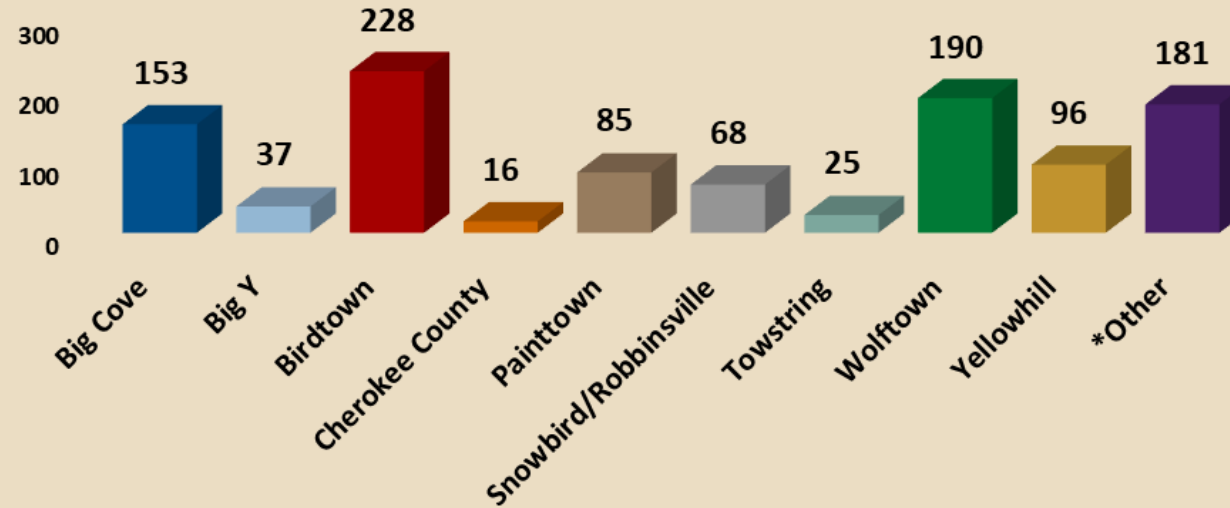
New Hospitalizations = 2
New Deaths = 0
New Recovered = 49
New Positives = 15
New Negatives = 283

Testing Data

Total Tests Administered = 18,540
Total Negative Tests = 17,156
Pending Tests = 305

Revised December 2, 2020

Total COVID-19 Positive Patients by Community Updated January 13, 2021



Since Noon Jan 11, 2021

Big Cove = 2

Big Y = 0

Birdtown = 3

Cherokee Co. = 0

Painttown = 3

Snowbird = 0

Towstring = 0

Wolftown = 1

Yellowhill = 4

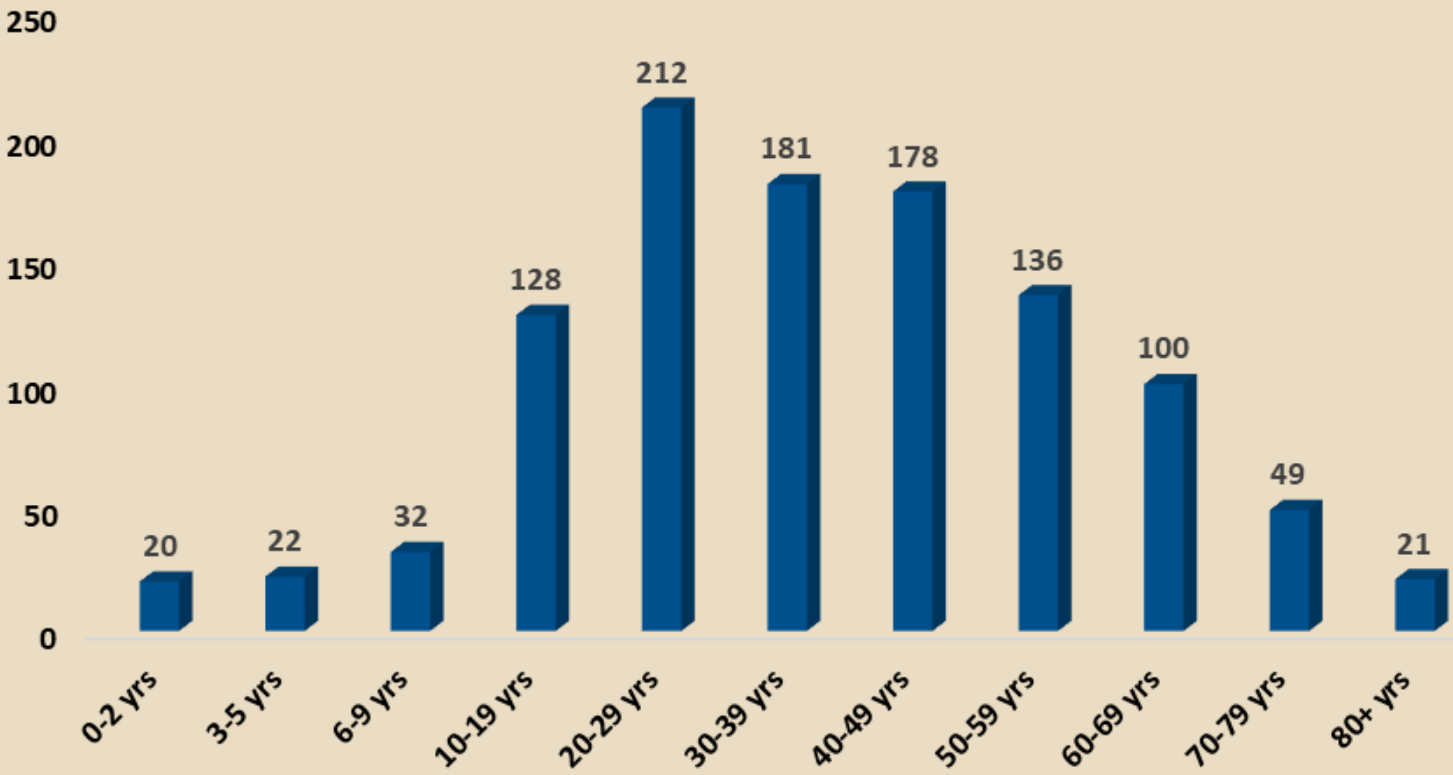
Other = 2

**Other includes positives residing outside listed communities or those who did not report community.*

Revised October 23, 2020

COVID-19 Positive Patients by Age Group

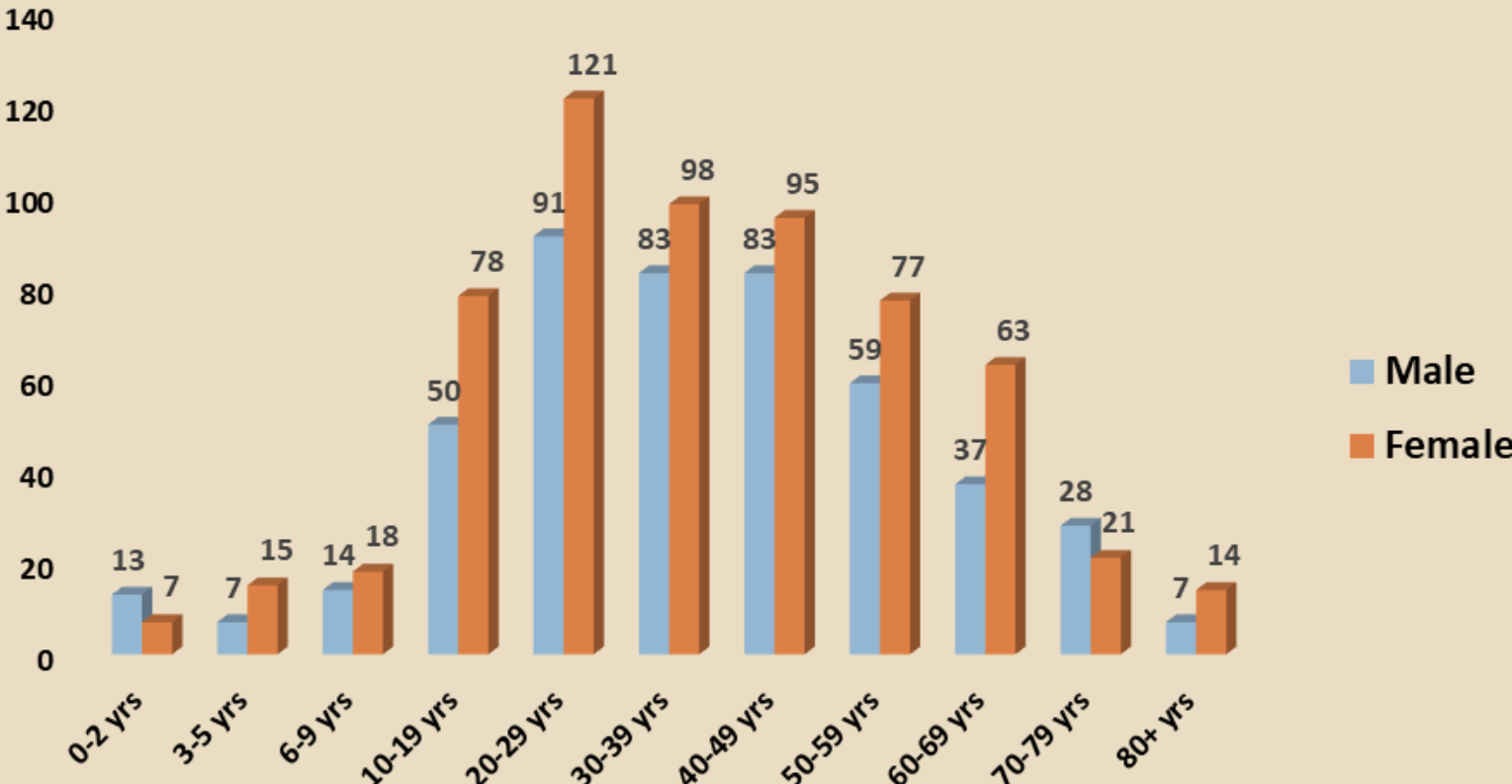
Updated January 13, 2021



Created July 15, 2020

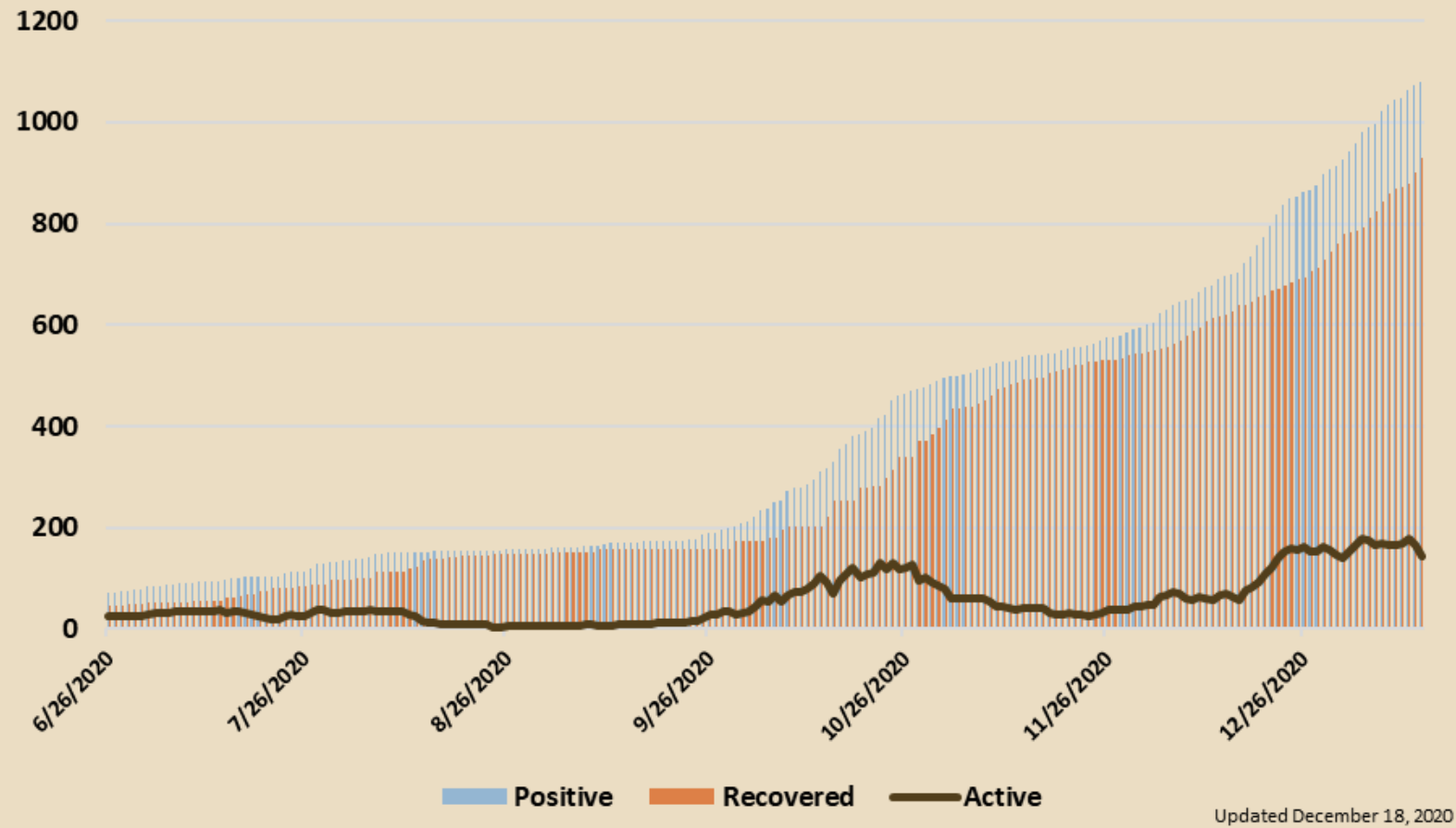
COVID-19 Positive Patients by Gender

Updated January 13, 2021

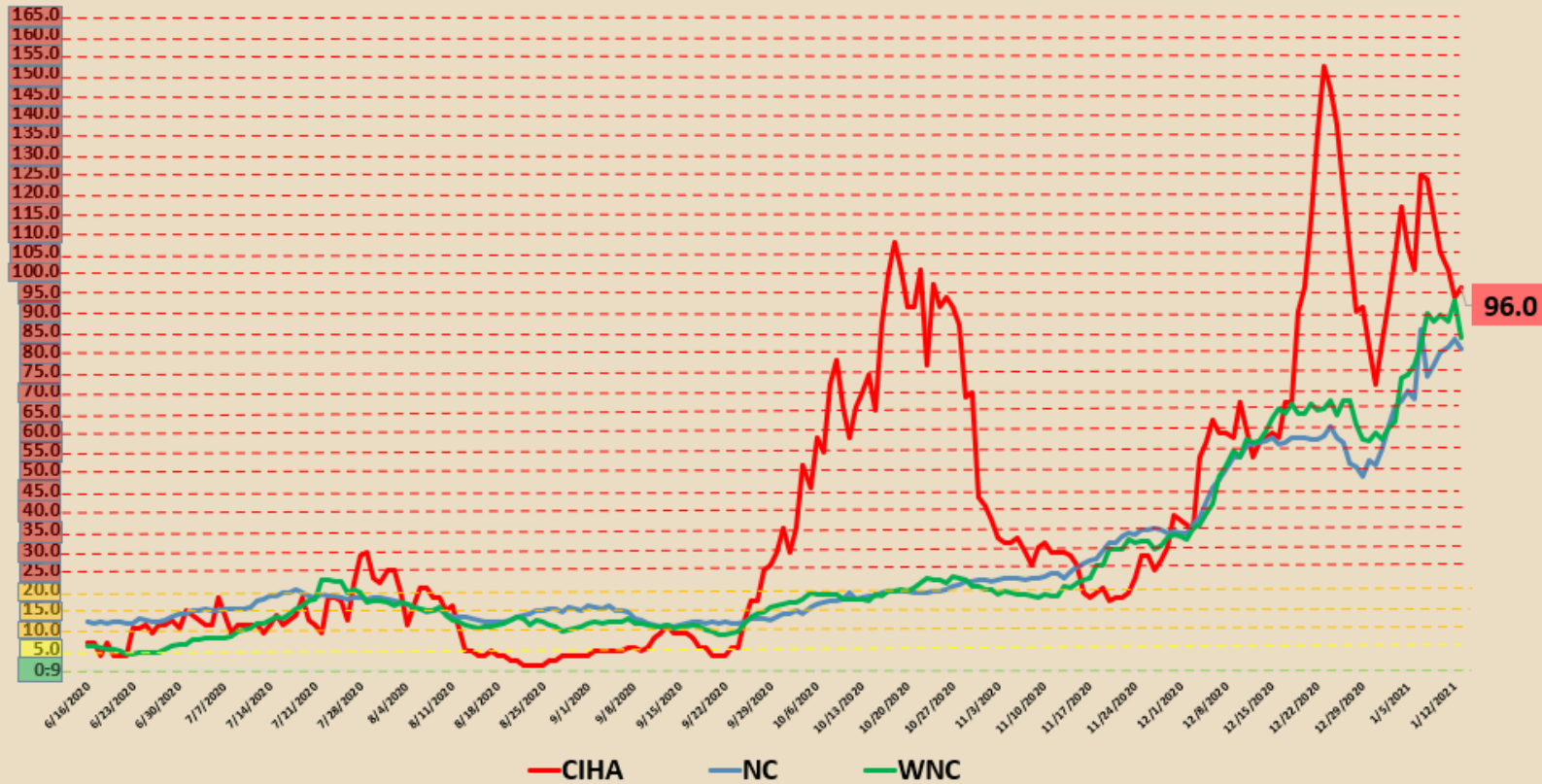


Created July 15, 2020

Total Positive, Total Recovered, and Current Active Cases Updated January 13, 2021



COVID-19 Daily New Reported Cases per 100,000 (7 day rolling average) CIHA, WNC, NC Updated January 13, 2021



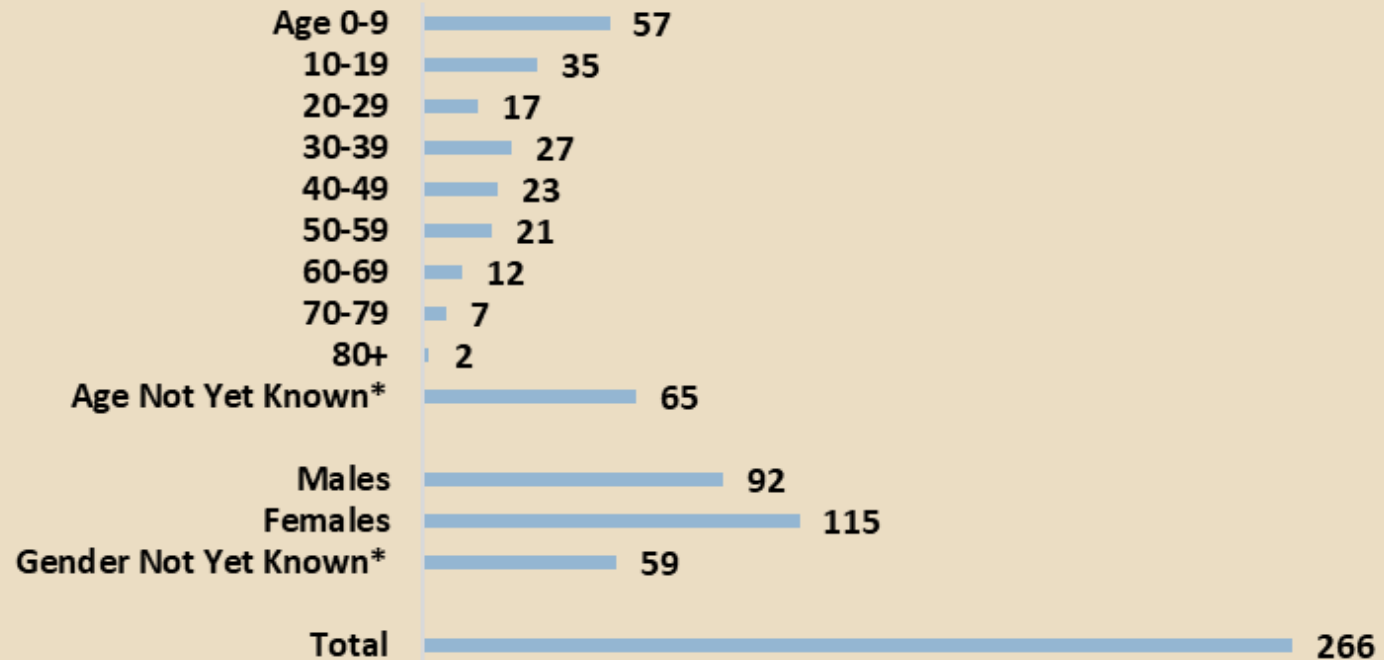
COVID Risk Levels

- Green**= TAKE EVERYDAY COVID-19 PRECAUTIONS. Less than 1 case per 100,000 on a 7 day rolling average.
- Yellow**= INCREASE EFFORTS TO LIMIT PERSONAL EXPOSURE. 1-9 cases per 100,000 on a 7 day rolling average.
- Orange**= LIMIT EVERYDAY ACTIVITIES TO INCREASE SAFETY. 10-24 cases per 100,000 on a 7 day rolling average.
- Red**= TAKE STRONG MEASURES TO LIMIT ALL CONTACT. 25+ cases per 100,000 on a 7 day rolling average.

Revised December 23, 2020

Direct Contacts That Are Currently Being Monitored and Under Home Quarantine

Updated January 13, 2021



*Not yet knowns may be recently added contacts or contacts that declined to provide certain information.

Created October 7, 2020